

# 180° TURNAROUND UNIT

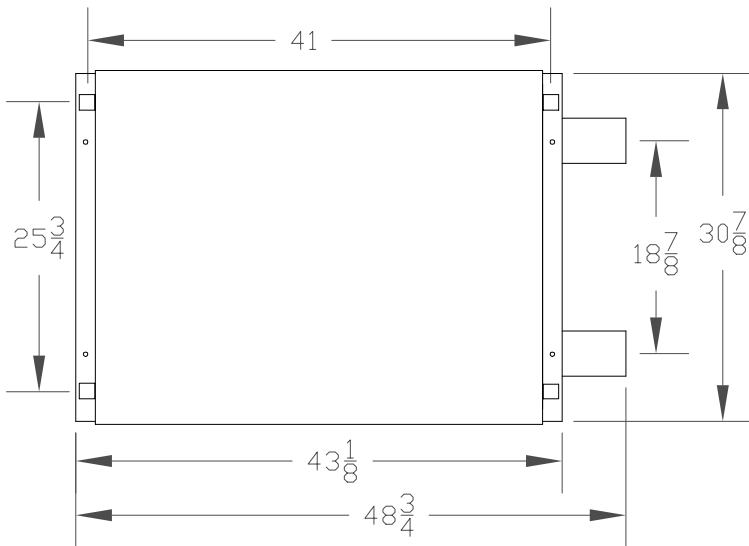
W/ BEARINGS

C00141A, C00141ASS, C00141AFG

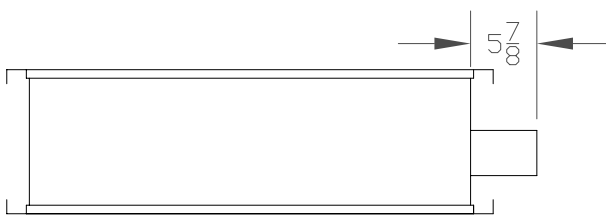


## FUNCTION

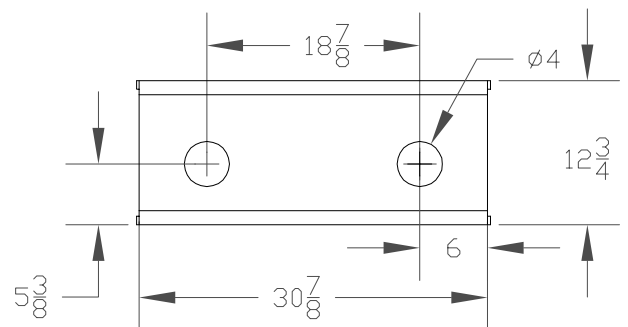
The **180° TURNAROUND UNIT** must be part of every conveyor that uses the 180° Direct Drive Unit. The Turnaround unit serves as the automatic cable tension take up on the slack side of the conveyor circuit. It also serves to complete the conveyor circuit by turning the cable 180° in a multi-corner circuit conveyor and a parallel tube conveyor. If the cable tension becomes too high (cable is too tight) or if the slack becomes excessive (cable is too loose), an electrical limit switch shuts off the electric motor.



**TOP VIEW**



**FRONT VIEW**



**SIDE VIEW**

## DIMENSIONS

# 180° TURNAROUND UNIT

W/ BEARINGS

C00141A, C00141ASS, C00141AFG

## INSTALLATION

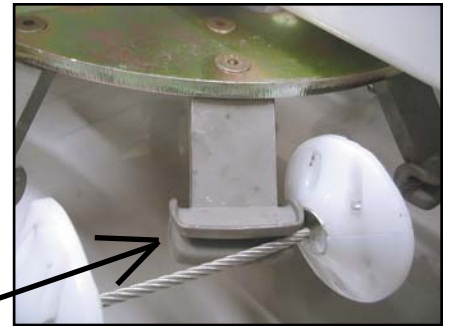


1. The 180° Turnaround Unit can be suspended from the ceiling or base mounted from the floor and may be mounted at any angle. ***Ideally, the 180° Turnaround Unit will be placed with the roller switch on the top of the unit. However, the unit may be installed on its side.*** The Turnaround Unit weighs approximately 260 lbs (118 kg).

***NOTE: USE PROPER SUPPORT TO AVOID STRUCTURAL DAMAGE OR BODILY INJURY***

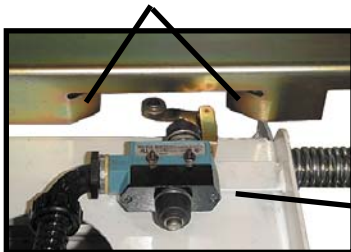
2. The unit will either attach directly to the 180° direct drive unit's exit port in a multi-corner circuit conveyor (See Type 3 Conveyor in System Layouts) or at the opposite end from the 180° direct drive unit in a parallel tube conveyor (See Type 1 and Type 2 Conveyors in System Layouts).
3. The tubing attaches to the 180° Turnaround Unit ports with a compression coupler. Use either a 4-bolt or 6-bolt compression coupler. Place half the compression coupler over the port after loosening the bolts. Place the tubing in the remaining half and tighten the bolts.
4. When placing the cable with discs in the idler wheel sprocket teeth, position the metal cone shaped slugs against the sprocket teeth. This will assure timing of the sprocket teeth with the cable discs when the conveyor is started.

CABLE DIRECTION



5. The Roller Switch (01101R) assures proper cable tension. It should be centered between the two tabs on the Nut/Switch Bracket (140158). To center the roller switch wheel, turn the Threaded Rod (140161) with a 9/16 in. socket or wrench on the hex head of the rod. First adjust the rod on the roller switch side, and then equally adjust the rod on the other side.

Nut/Switch Bracket Tabs

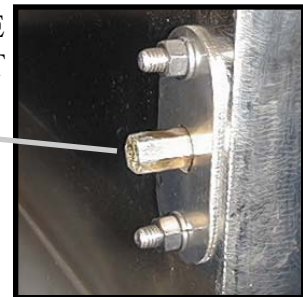


INSIDE UNIT

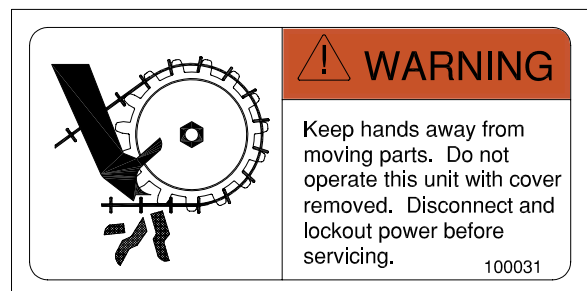
Roller Switch

OUTSIDE UNIT

Hex Head of Threaded Rod



6. Take care to adhere to the following warning label on the 180° Turnaround Unit.



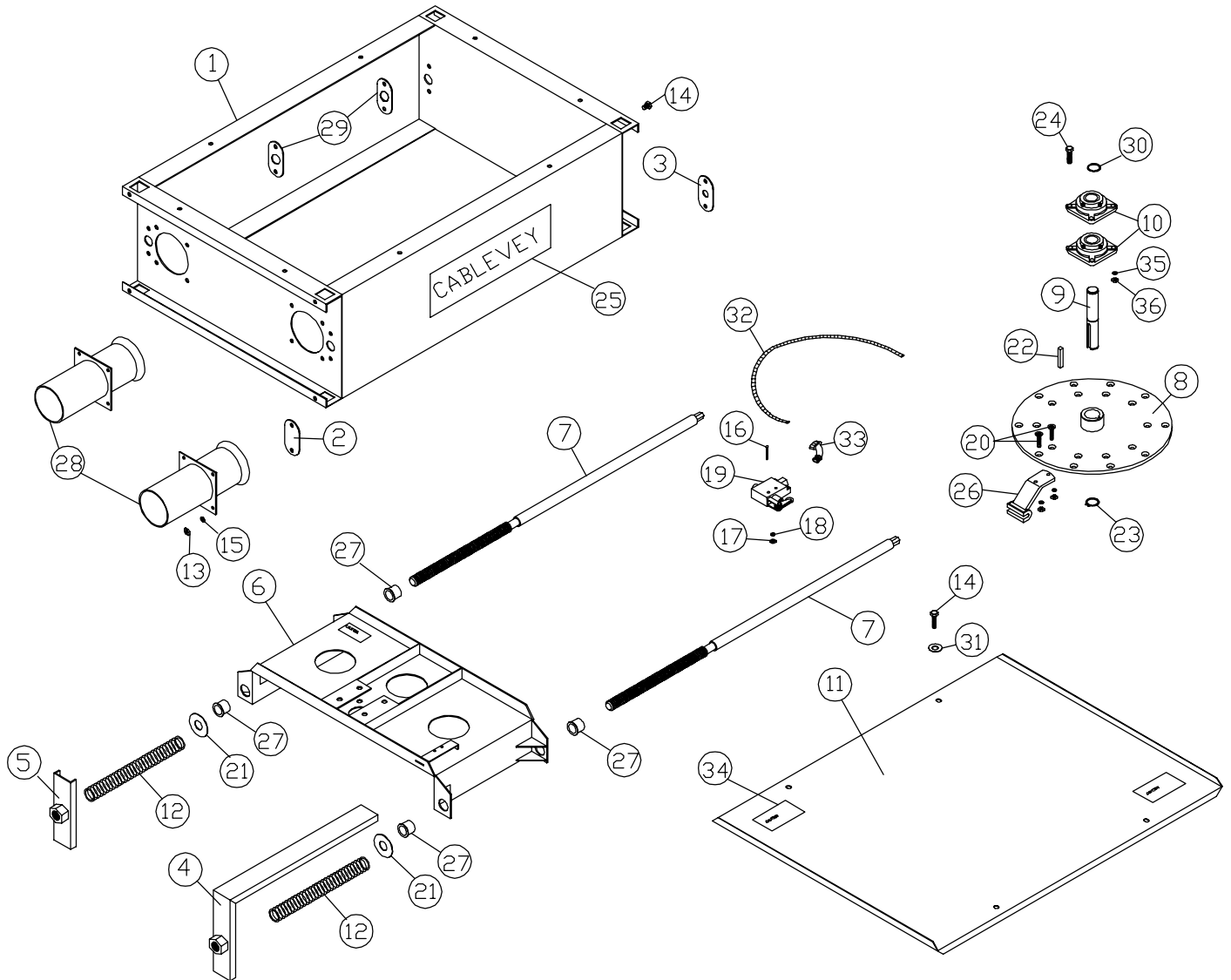
# 180° TURNAROUND UNIT

W/ BEARINGS

C00141A, C00141ASS, C00141AFG



## PART ASSEMBLY



# 180° TURNAROUND UNIT

W/ BEARINGS

C00141A, C00141ASS, C00141AFG



## PART NUMBER IDENTIFICATION

ITEM	PART NO.	DESCRIPTION	QTY.
1	140155SS	SS 4 IN TURNAROUND FRAME	1
2	140156SS	SS ROD COVER	2
3	140157SS	SSROD HEX COVER	2
4	140158 <sup>2</sup>	NUT/SWITCH BRKT	1
5	140159 <sup>2</sup>	NUT/ADJUST BRKT	1
6	140160 <sup>1</sup>	PAINTED IDLER WHEEL FRAME	1
7	140161 <sup>4</sup>	1" THREADED ROD	2
8	140162 <sup>2</sup>	IDLER WHEEL WELDMENT	1
9	140163 <sup>2</sup>	IDLER SHAFT	1
10	140022 <sup>5</sup>	4 BOLT 1 IN. FLG. BRNG.	2
11	140165SS	SS TOP AND BOTTOM COVER	2
12	140166 <sup>2</sup>	4 IN COMP SPRING	6
13	01020S	3/8-16 HEX NUT STAINLESS	36
14	01076S	3/8-16 X 1 HEX BOLT STAINLESS	32
15	01034S	3/8 LOCK WASHER STAINLESS	36
16	01044 <sup>3</sup>	#6-32 X 1 1/2 RD HD BOLT	2
17	01049 <sup>3</sup>	#6-32 HEX NUT, ZINC AND YELLOW	2
18	01094 <sup>3</sup>	#8 LOCK WASHER	2
19	01101R	ROLLER SWITCH FOR DRIVE UNIT	1
20	01910 <sup>3</sup>	3/8-16 X 1 1/4 ALLEN HD COUNTER	20
21	01916 <sup>3</sup>	1 IN SAE FLAT WASHER	4
22	02008 <sup>3</sup>	3/8 X 3/8 X 2 1/4 SQ KEY	1
23	02019 <sup>3</sup>	1 3/16 SNAP RING	2
24	01905S	7/16-14 X 1 1/4 HEX BOLT STAINLESS	8
25	100068	WHITE CABLEVEY DECAL 14.5 X 4.5	2
26	140010S	STAINLESS TOOTH SECTION	10
27	140034	1-1/4 X 1 X 1 NYLON FLANGE BUS	4
28	140080 <sup>1</sup>	FLARED PORT	2
29	140188SS	SS END DISC PLATE	4
30	02011 <sup>3</sup>	1 IN SNAP RING	1
31	01077S	3/8 STAINLESS FLAT WASHER	8
32	140169	1/2 IN PLASTIC SUPER FLEX CONDUIT	2.2 FT
33	140170	1/2 IN 90 DEG PLASTIC CONDUIT	2
34	100031	WARNING DECAL FOR DRIVE SPROCKET	6
35	01907S	STAINLESS 7/16 LOCK WASHER	8
36	01906S	7/16-14 HEX NUT STAINLESS	8

<sup>1</sup> - Part number for C00141A is followed by "P" (for painted), C00141ASS (stainless turnaround) by "S", and C00141AFG (food grade turnaround) by "SSFG"

<sup>2</sup> - For stainless systems, "SS" follows the part number. For food grade systems, "SSFG" follows the number.

<sup>3</sup> - For stainless or food grade systems, "S" should be included after the part number.

<sup>4</sup> - For stainless or food grade systems "SS" should be included after the part number.

<sup>5</sup> - For stainless or food grade systems "FG" should be included after the part number.